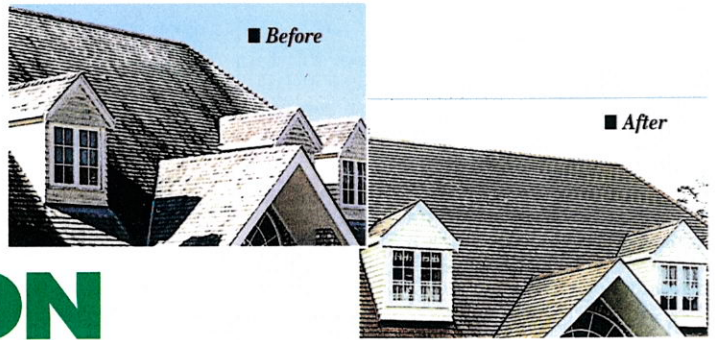


LATEST INNOVATION IN TIMBER PRESERVATION



A timber preservation product well-established in the New Zealand market is about to hit Australian shores through a new company set up specifically to market the product here in Australia.

Bruce Bell of Laminated Timber Supplies (LTS) was so impressed with what he saw in the protective oil, developed in New Zealand through Churton Distributors, that he has established a separate company under the LTS group called Timber Coatings Australia.

And the product name that will hopefully become a household name? - CD50.

Arthur Reid, managing director of Churton Distributors explained what CD50 is all about, stating it is a water repellent, fungicidal timber protective oil that has been developed to naturally penetrate timber by migration.

"This means it has the ability to work its way through timber until it expends itself, slowly replacing the natural moisture in the timber as it penetrates," he commented.

"It has three basic characteristics, which are the foundation of its use - water repellency, dimensional stability and fungicidal preservation. Applied with a brush or spray, it gives water repellency to wherever it migrates.

"It is important to have a good form of water repellency throughout the timber. This helps significantly towards the control of stability. You can paint the outside but while the surface is in good condition and hasn't broken down, it will not allow moisture to enter the timber. Once the coating starts to break down, you'll get cracking and warping to some degree.

"CD50 is designed to enhance timber dimensional stability to stop it from warping and cupping, and help prevent it from splitting.

"For example if you have a weatherboard house that has some of these problems, once you apply CD50, in about four months time the CD50 will have penetrated the timber and in a sense 'remoisturised' it, the timber will return to its original shape."

Arthur said the product is designed to lubricate the timber fibres and maintain the modulus of elasticity of the timber.

"This is a significant factor in maintaining the full structural strength of the timber."

He said it also has an active ingredient known as Copper 8, that will deposit itself into the cells as it migrates through the timber. This is an anti-microbial preservative, protecting against fungal growth and a range of decay situations, including termite infestation.

"We've also tried to incorporate into it the ability to use it as a natural timber finish, so we've introduced color tonings to it."

Arthur then gave the example of a pressure treated preservative used for poles in in-ground situations.

"The pole is protected against rot and decay but it isn't stabilised as far as moisture is concerned, and may warp and crack - but it won't rot.

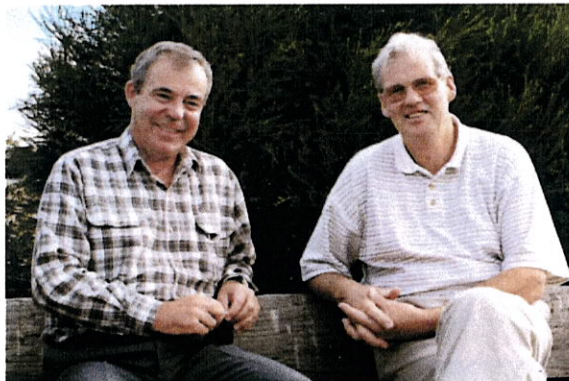
"You've only controlled one factor. If you introduce CD50 that penetrates the timber and gets the water out of the cells, things will be different. However it is not proposed CD50 is to be used as an in-ground substitute or treatment for pressure treated timber poles.

"If a paint or sealer is applied to pressure treated pole, it will in effect seal in the moisture and when exposed to the sun for a period of time, you end up with a 'pressure cooker' - the water expands and the timber cracks.

"Because CD50 is designed to migrate, it will keep on penetrating into the timber long after its applied to the surface. As the moisture releases from the timber, it allows it to 'breathe' very slowly as the CD50 replaces it.

"Having expelled the water, CD50 stabilises the moisture content of the timber and is not effected from this point by changes of temperature."

Bruce Bell said he has considerably researched the product and is extremely impressed with its performance overseas.



■ Bruce Bell of Laminated Timber Supplies in Bayswater, Vic, has established Timber Coatings Australia to distribute a new timber preservative oil in Australia, supplied by Arthur Reid, of Churton Distributors, who successfully developed the product for use in New Zealand.

"We believe CD50 will fill a vacuum in our industry in the surface preservation market. And the great thing about it is that it is not film forming. We can see that it gives the timber long term stability, particularly when it's used in exterior and interior applications. And has the added advantage of being non-hazardous with a low toxicity for use in the environment.

"This is one issue that will need to be seriously considered in the future as demands for more environmentally-friendly products are called for.

"Our industry needs a coating that is going to give us some degree of assurance that with regular cyclical maintenance, which will enhance the timber, maintain its color, and the structural integrity. Above all it must give long term service.

"It's also important to us that we feel comfortable, not only with the starting point of the engineered product but also with an efficient coating system," he stated.

Arthur added that CD50 does not have the problems associated with the leeching of chemicals. He

also states it is preferable not to coat CD50 treated timber with film forming surface coatings as its natural properties must allow for the timber to 'breathe'.

He said it was first marketed in 1989, and was tested for 12 years prior to its release.

"It can be used on any species of timber," he commented.

Referring to the New Zealand experience Arthur stated the acceptance in that country has been phenomenal. He has had calls from all over the world from people interested in obtaining CD50, "... and we've never marketed to any of these places, it has simply been passed on by word of mouth."

Speaking on actual cases where the product has been used successfully, Arthur mentioned the case of a shopping complex in a major NZ city that is roofed with shingles. Traditionally the shingles are replaced every 10 years in that area, "... they literally just wear out.

"This client had tried everything he could find on the roof to try and extend its lifetime and nothing had worked. He heard of CD50, applied one coat to the roof and three years later, he sent us a letter saying the result was absolutely marvellous. He had never seen anything like it.

"The shingles can be cupped and warped, but with CD50, once it penetrates, it restores them back flat and waterproofed.

"I honestly can't give you any examples of failures, providing it has been applied as recommended.

"Another example is of a historic building we have called Acacia Cottage built in the 1820s. It is roofed with hand cut shingles and shakes. Naturally time has taken its toll on the roof and the shingles are virtually disappearing.

"When asked to help preserve it, we chemically cleaned the roof so that it was brought back to its original natural timber color using a cherry picker so that we didn't touch the brittle shingles, then we sprayed it liberally with CD50.

"After three months I could walk on the shingles without any of them breaking. All the shingles that were cupped had gone back to their original flat position."

So enthusiastic is Timber Coatings Australia about this product, the first stocks have already arrived at the company's Bayswater warehouse.

Brochures will soon be ready for distribution, then "... we're ready to roll," Bruce commented.

"It's a completely new product here and we have to let people know what it's capabilities are before it can be efficiently distributed through the normal channels.

"We're about to embark on a national marketing campaign following the New Zealand example, and once it is out there in the marketplace, we're sure it will be the 'best thing since sliced bread' in timber preservation," Bruce stated enthusiastically.